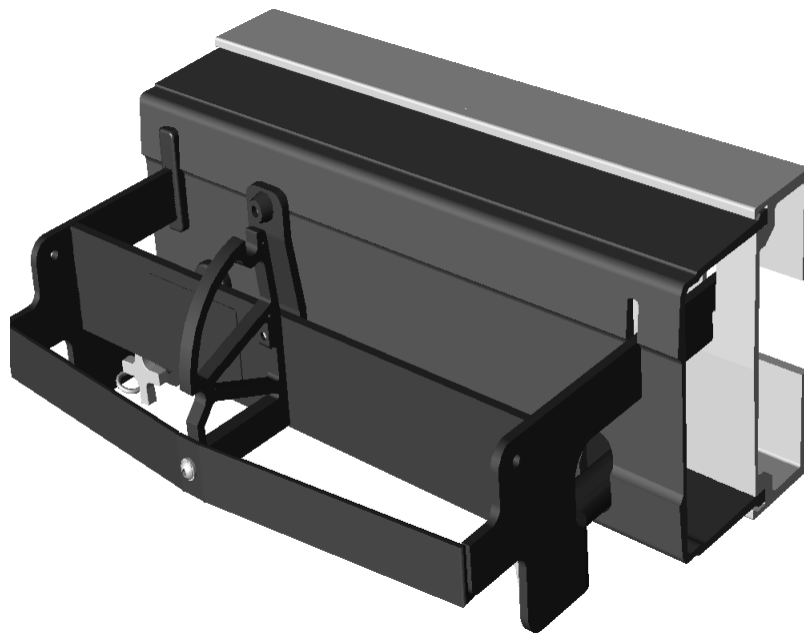
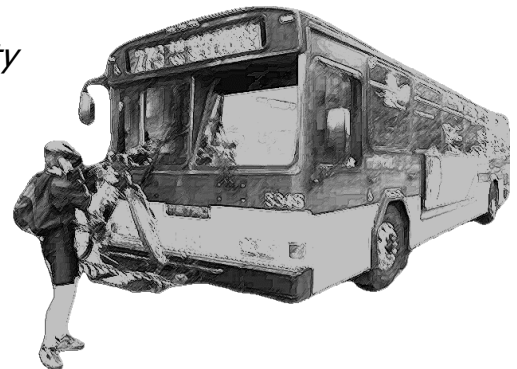


## Ten Second Bracket™



What bike rack can be installed or removed in ten seconds or less? Romeo RIM and Sportworks Northwest have the answer! The new Ten Second Bracket™ will save you valuable labor hours. Designed to attach in two easy steps, the Ten Second Bracket™ provides all the security and features you currently enjoy with your HELP® bumpers and Sportworks Bike-Racks-for-Buses™; notable features include...

- 🚲 *Quick release*
- 🚲 *Quick and easy initial installation and serviceability*
- 🚲 *No tools required for installation or removal*
- 🚲 *Installs in ten seconds or less!*
- 🚲 *Two easy steps! See reverse for details!*



### Step 1:

### **Insert Sportworks' Ten Second Bracket™ through slots and holes in your Romeo RIM HELP® bumper**

A collaborative engineering and design project by Romeo RIM and Sportworks Northwest has made the task of installing Bike-Racks-for-Buses™ quick and easy.

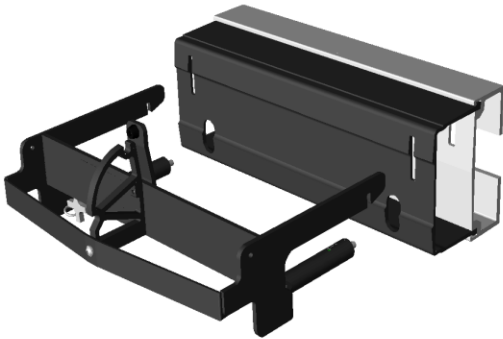
The OEM fabricated slots in the HELP® bumper module, and the high strength aluminum beam of the bumper, permit quick and easy installation.

Best of all, no tools are required and you maintain your bumper warranty!

This system uses a pre-loading concept that, with some assistance from gravity, securely engages the top slots of the bracket. This allows the unit to be vibration free and tight as a drum.

Minimizing the movement of the bracket at the contact point ensures noiseless travel and also greatly reduces long-term wear and possible material fatigue.

Extensive testing has shown this to be the quickest, easiest and most reliable bike rack solution for your fleet!



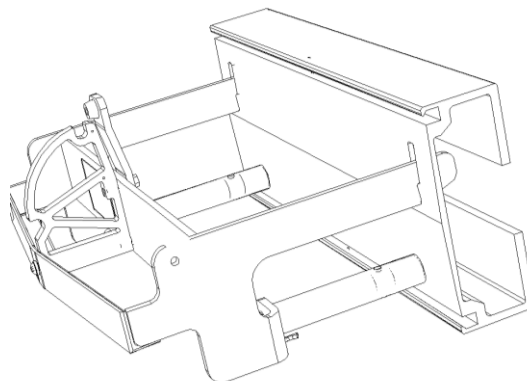
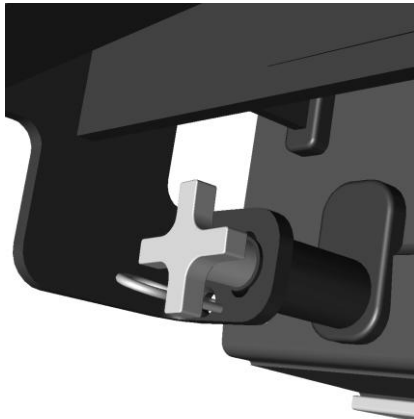
### Step 2:

### **Tighten the hand knob to secure the bolt into the threaded holes in the aluminum beam of the HELP® bumper. A clevis pin prevents loosening of the knob.**

Minimizing the time, and eliminating the tools, needed to install the Bike-Racks-for-Buses™ were our most important design objectives. We achieved this goal by developing mounting hardware that can be easily, quickly and firmly hand secured.

The knob is connected to a long bolt that fits through the mounting bracket and is threaded into the high strength aluminum beam of the HELP® bumper. A clevis pin engages through a hole in the hand knob to prevent it from loosening.

This system provides a convenient and practical solution for those with towing situations, bus garage parking density issues or have seasonal use of the Bike-Racks-for-Buses™.



**Sportworks Northwest Inc.**  
15540 Wood-Red Rd NE #A-200  
Woodinville, WA 98072  
425-483-7000

For more information on this and many other products from Sportworks or Romeo Rim, please visit our websites at: [www.sportworks.com](http://www.sportworks.com) or [www.helpbumpers.com](http://www.helpbumpers.com)

**Romeio RIM, Inc.**  
74000 Van Dyke Avenue  
Romeio, MI 48065  
586-336-5800